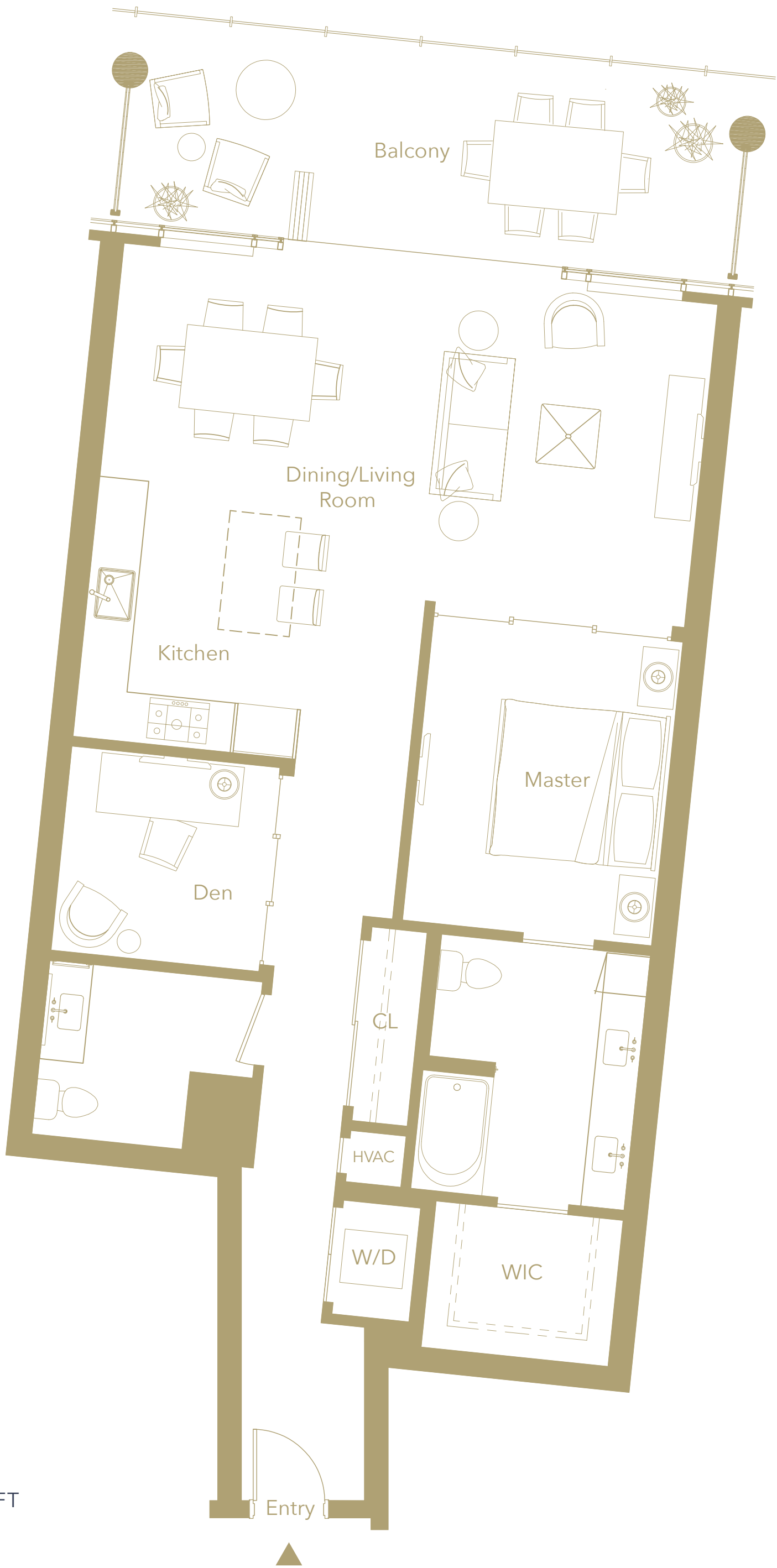


INFINITY  
SHORE CLUB RESIDENCES

RESIDENCE 3F, 4F, 5F, PENTHOUSE F

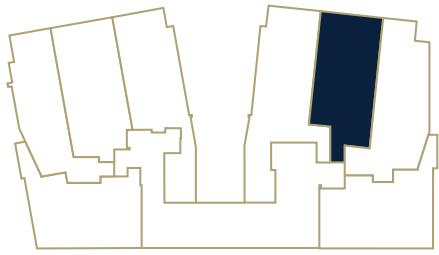


1 BEDROOM  
DEN  
1.5 BATHROOMS

1,167 - 1,169 INTERIOR SQ. FT  
208 EXTERIOR SQ. FT  
1,375 - 1,377 TOTAL SQ. FT

SALES GALLERY | 2715 1ST AVENUE | SEATTLE, WA 98121

ALKI AVE SW



3RD - 6TH FLOOR



INFINITYSHORECLUB.COM



Realogics  
Sotheby's  
INTERNATIONAL REALTY



Offered by Vibrant Cities, LLC. Seller reserves the right to change the product offering without notice. Renderings may not represent unit shown. The floor plans are drawn to varying scales, and should not be relied on as representations, express or implied. Square footage or floor areas shown in any marketing or other materials are approximate and may be more or less than the actual size. Seller reserves the right to change the product offering without notice. E&OE.