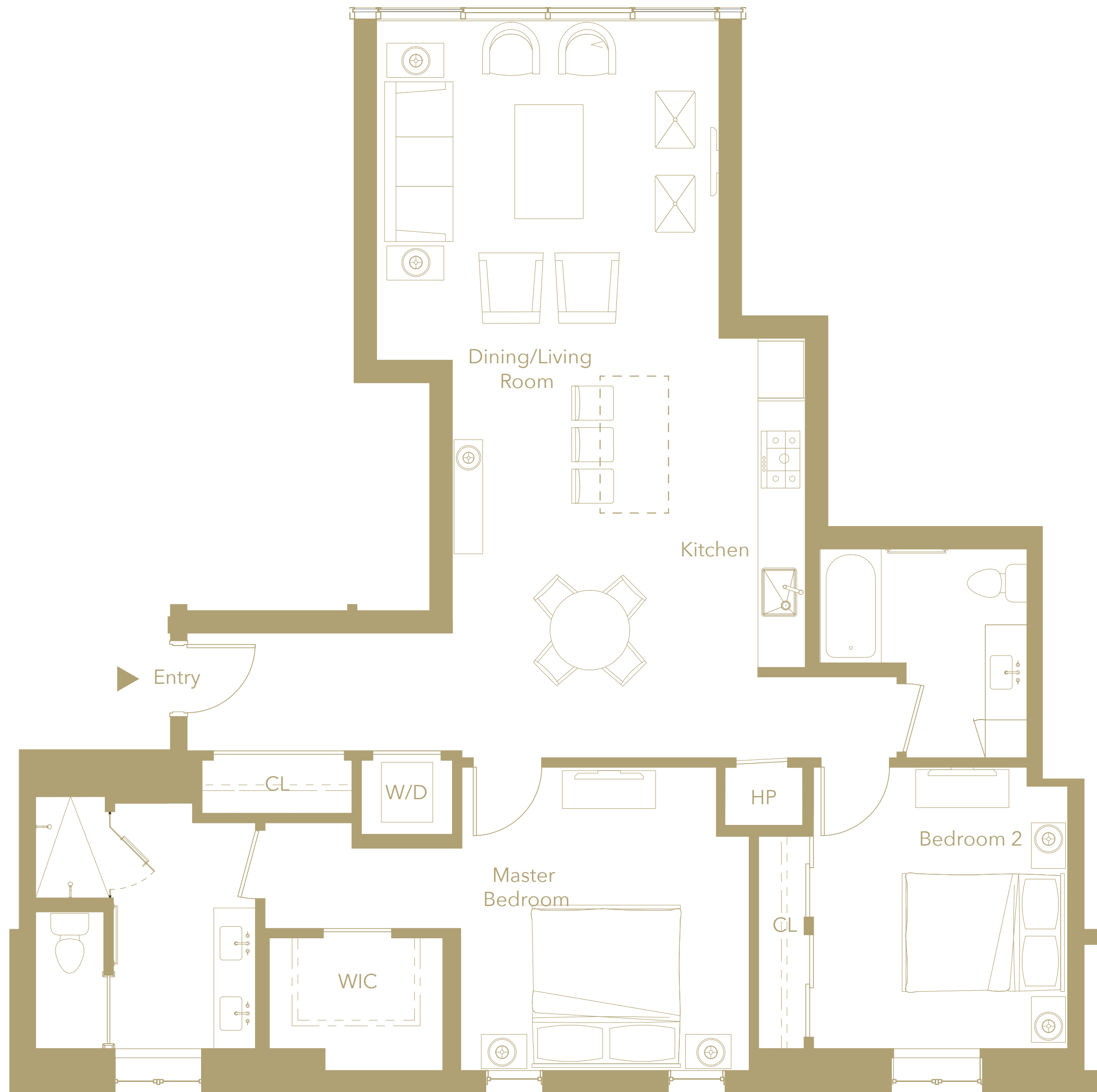


INFINITY

SHORE CLUB RESIDENCES

RESIDENCE 4D, 5D, PENTHOUSE D

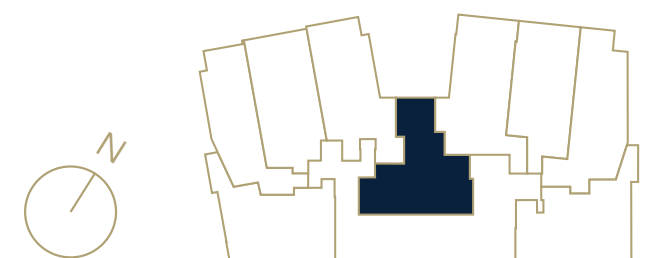


2 BEDROOMS
2 BATHROOMS

RESIDENCE 4D - 1,338 TOTAL SQ. FT
RESIDENCE 5D - 1,330 TOTAL SQ. FT
RESIDENCE PHD - 1,331 TOTAL SQ. FT

SALES GALLERY | 2715 1ST AVENUE | SEATTLE, WA 98121

ALKI AVE SW



4TH - 6TH FLOOR



INFINITYSHORECLUB.COM



Offered by Vibrant Cities, LLC. Seller reserves the right to change the product offering without notice. Renderings may not represent unit shown. The floor plans are drawn to varying scales, and should not be relied on as representations, express or implied. Square footage or floor areas shown in any marketing or other materials are approximate and may be more or less than the actual size. Seller reserves the right to change the product offering without notice. E&OE.