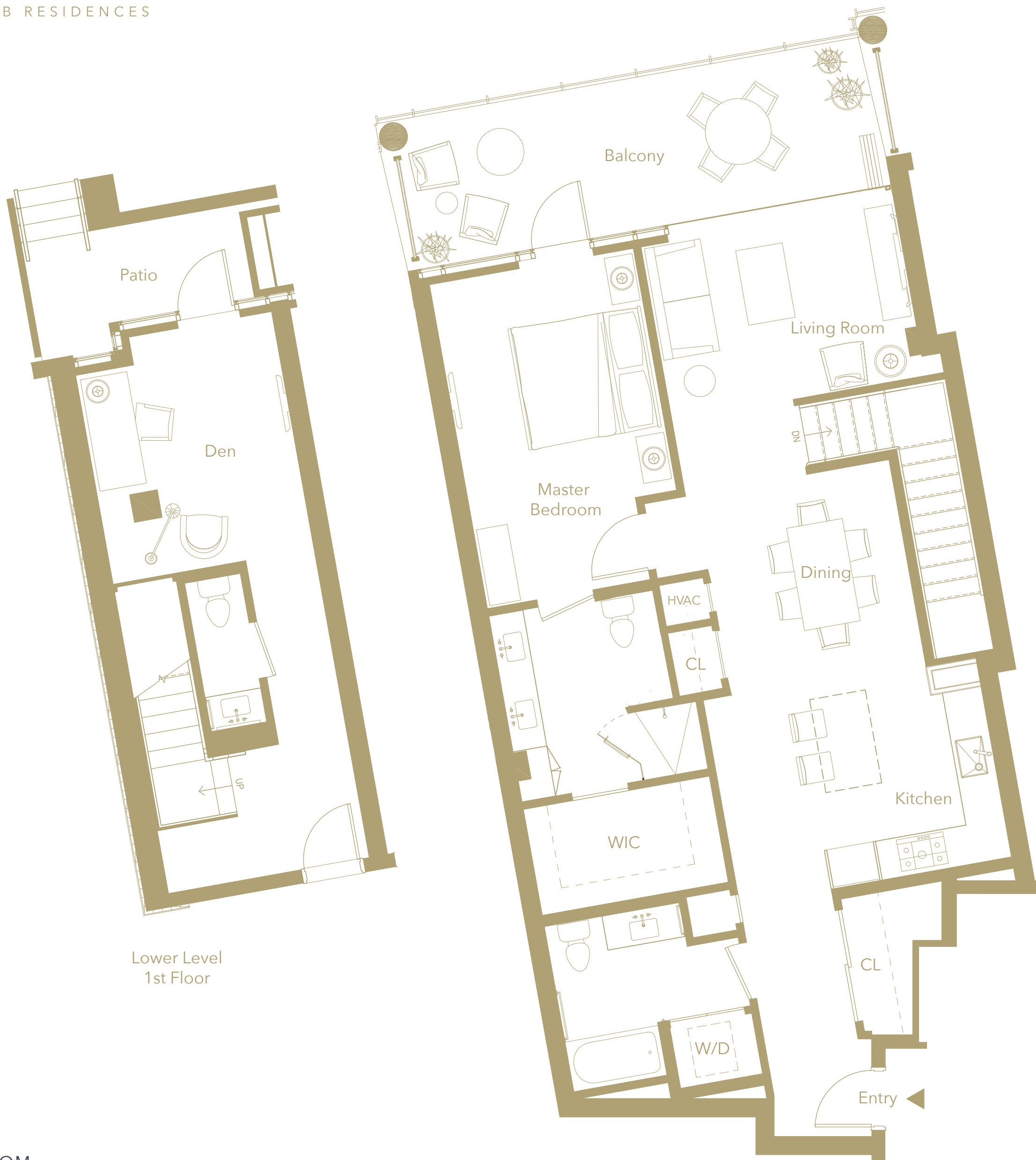


# INFINITY

SHORE CLUB RESIDENCES

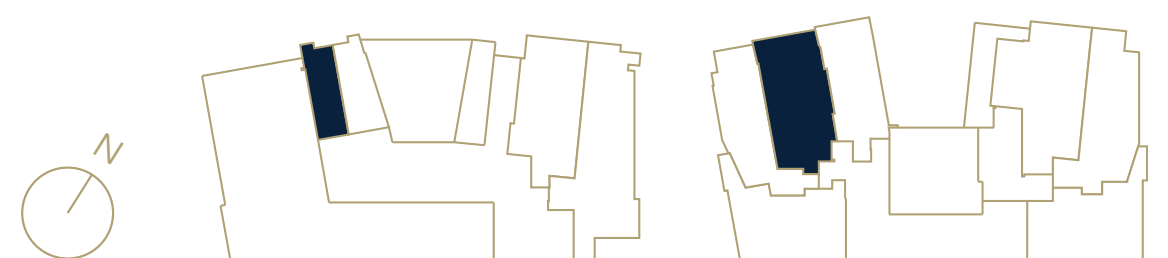
## RESIDENCE 2B



Lower Level  
1st Floor

Upper Level  
2nd Floor

ALKI AVE SW



1ST FLOOR

2ND FLOOR



INFINITYSHORECLUB.COM

1 BEDROOM  
DEN  
2.5 BATHROOMS

1,463 INTERIOR SQ. FT  
264 EXTERIOR SQ. FT  
1,727 TOTAL SQ. FT

SALES GALLERY | 2715 1ST AVENUE | SEATTLE, WA 98121



Offered by Vibrant Cities, LLC. Seller reserves the right to change the product offering without notice. Renderings may not represent unit shown. The floor plans are drawn to varying scales, and should not be relied on as representations, express or implied. Square footage or floor areas shown in any marketing or other materials are approximate and may be more or less than the actual size. Seller reserves the right to change the product offering without notice. E&OE.